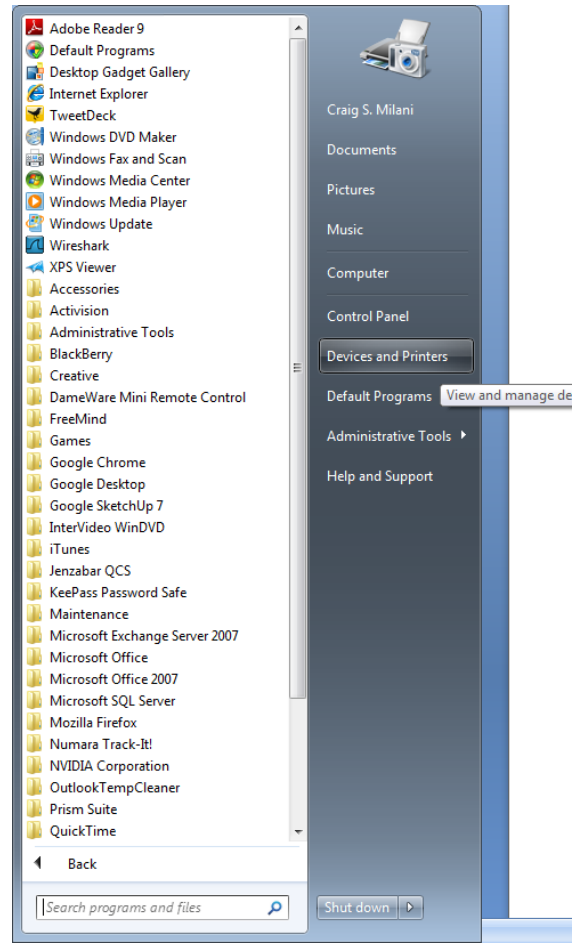
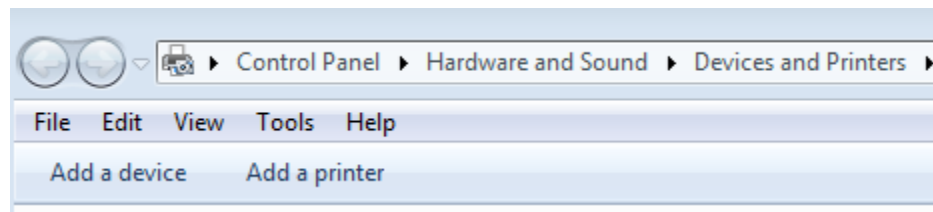


How to Install a Printer Using Windows 7

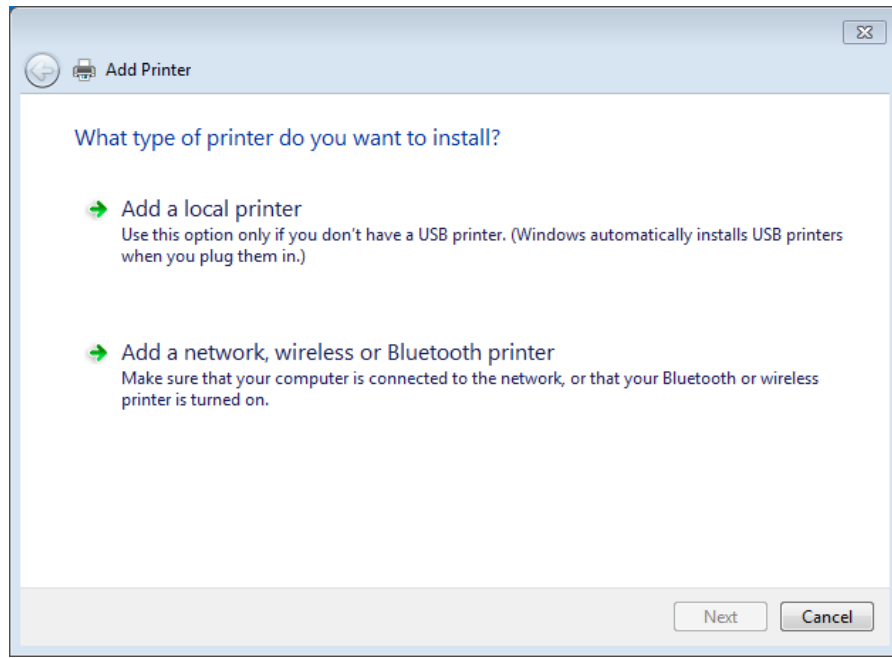
1. Go to **Start Menu--> Devices and Printers**



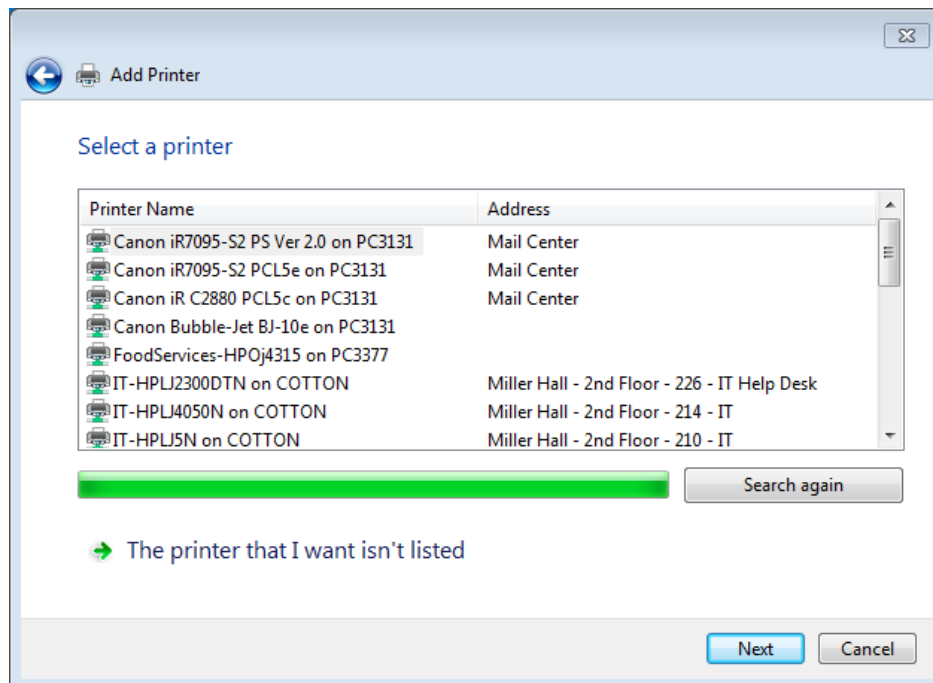
2. Near the address bar, select '**Add a Printer**'.



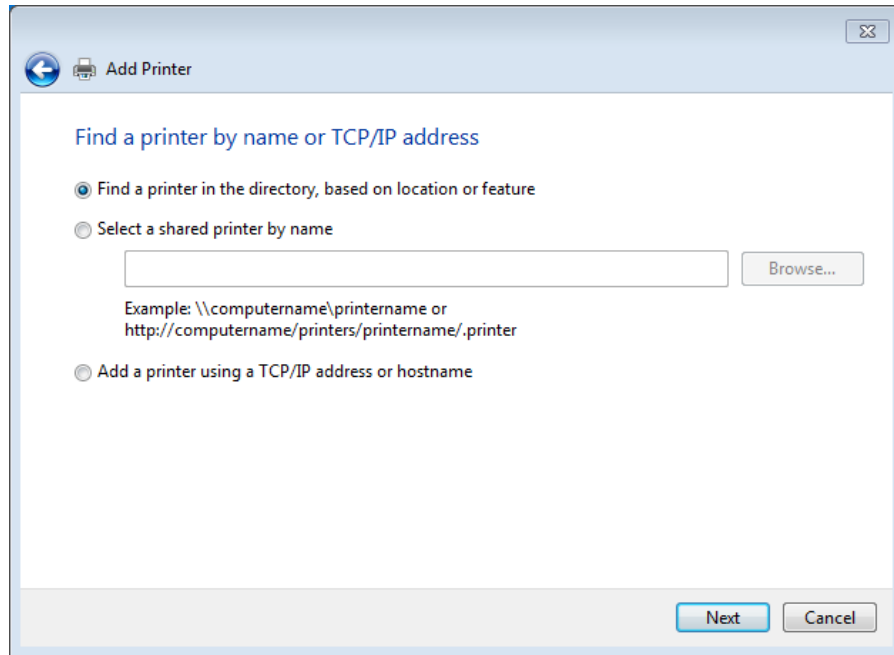
3. Select '**Add a network, wireless, or Bluetooth printer**'.



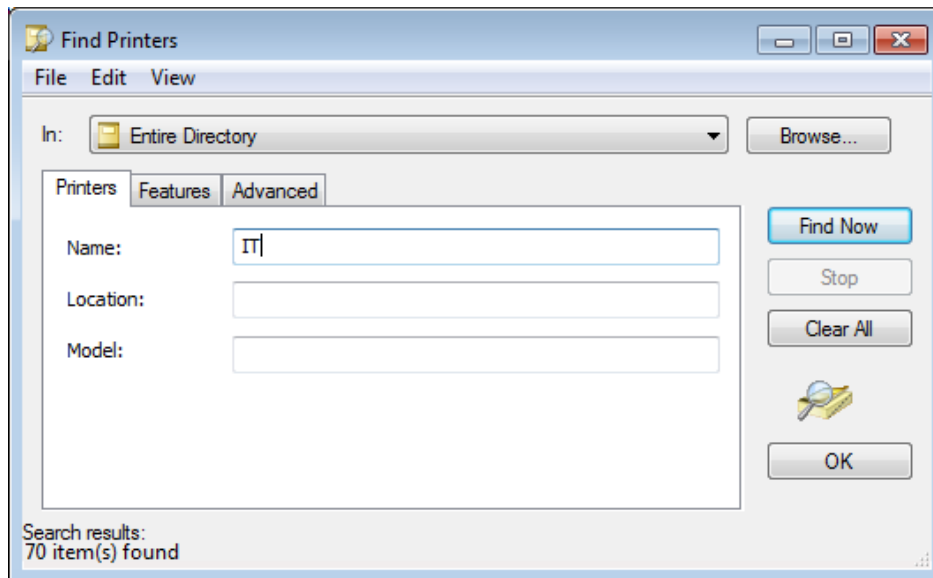
4. Select '**The printer that I want isn't listed**'



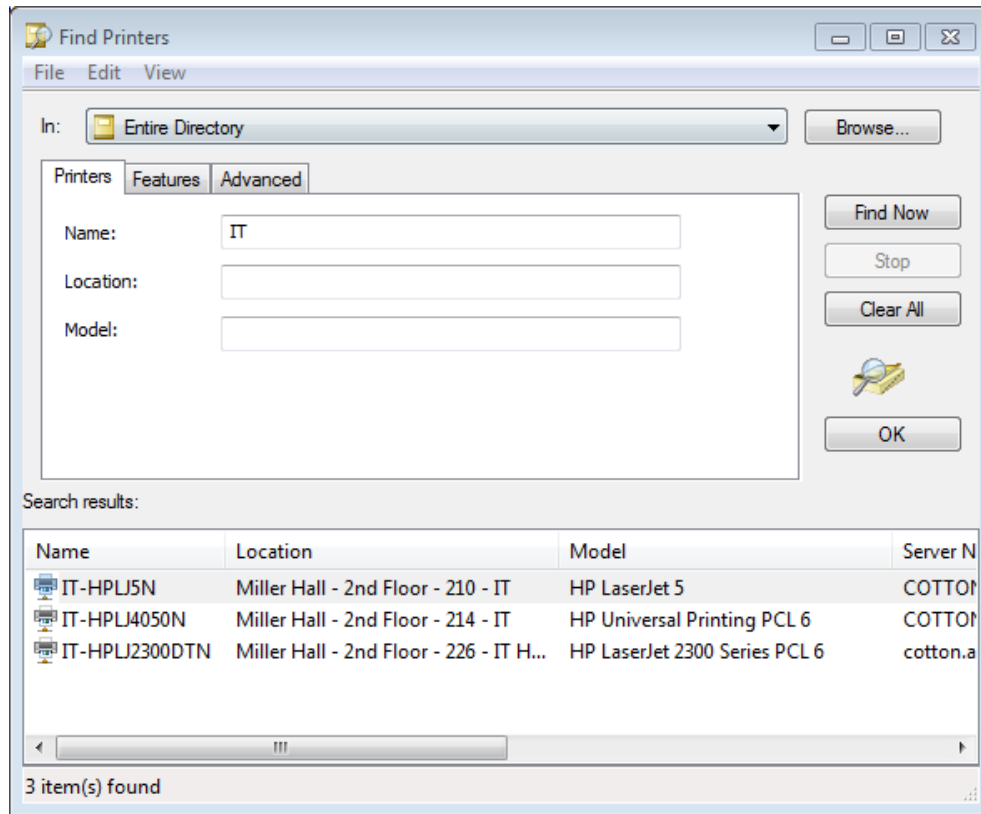
5. Select the bullet point '**Find a printer in the directory...**', Click **Next**



6. In the next window, in the 'Name' field, type in some information about the printer they want installed. (Ex: I want IT's printer, so I can just type in IT and it will find all of the printers labeled IT); Click **Find Now**



7. Select the desired printer and click **OK**.



8. On the next window, select the check box next to ' **Set as default printer** ' if the printer is going to be the default printer. Select **Next**.

9. Select **Finish**.

